



7 Beechworth House 40-48 High Street , London, W3 6LG

Located in Acton High Street in this purpose built block is this spacious, modern one bedroom flat which is available to move in to immediately.

Set on the second floor (with lift access) this very well maintained property comprises: entrance hall with intercom entry system, spacious open plan living/dining/kitchen, spacious bedroom with built in wardrobes and a modern bathroom.

The location boasts excellent local amenities and transport links.

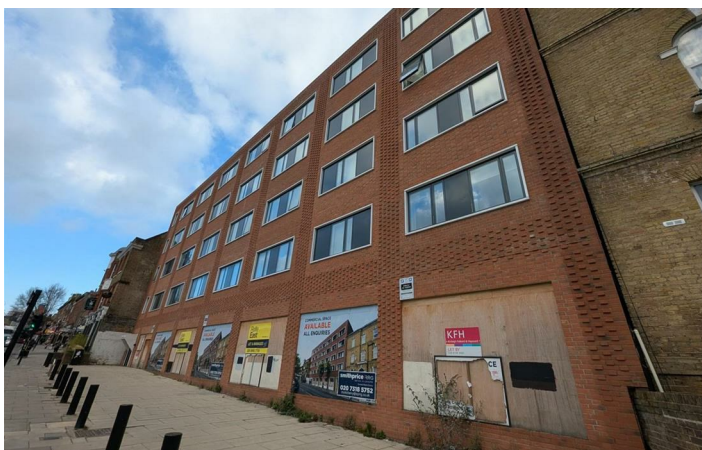
Council Tax Band: C

£1,750

7 Beechworth House 40-48 High Street , London, W3 6LG

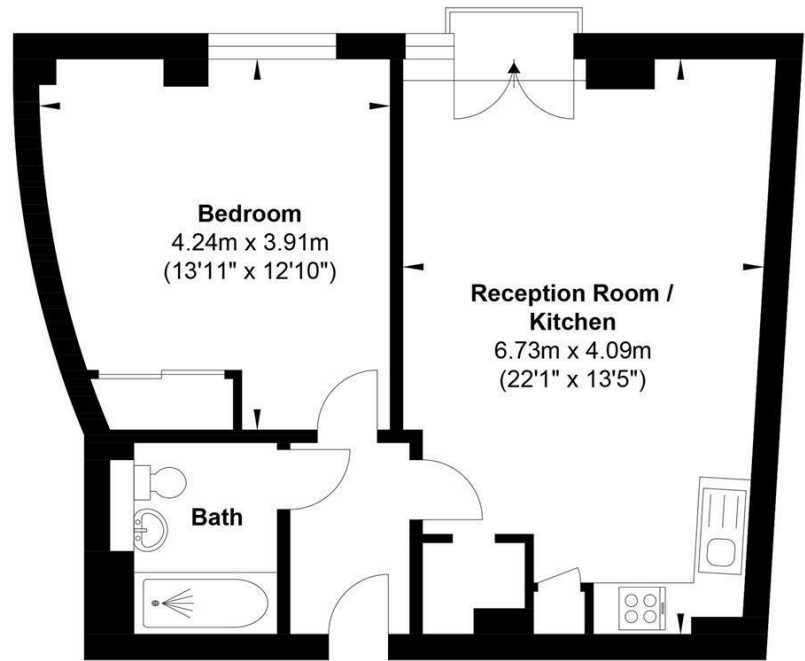


Directions





Floor Plan



Second Floor

Gross Internal Floor Area : 52.9 m2 ... 569 ft2

Whilst every attempt has been made to ensure the accuracy of the floor plan contained here, measurements of doors, windows, rooms and any other items are approximate and no responsibility is taken for any error, omission, or mis-statement. This plan is for illustrative purposes only and should be used as such by any prospective purchaser. The services, systems and appliances shown have not been tested and no guarantee as to their operability or efficiency can be given.

These particulars, whilst believed to be accurate are set out as a general outline only for guidance and do not constitute any part of an offer or contract. Intending purchasers should not rely on them as statements of representation of fact, but must satisfy themselves by inspection or otherwise as to their accuracy. No person in this firms employment has the authority to make or give any representation or warranty in respect of the property.

